

Running Interpex Programs Under Windows 95

The following table illustrates the Windows 95 & NT compatibility of Interpex Programs:

Program Name	Windows 95®	Windows NT® v. 4 service pack 2 or higher
All Resix, Emix, Magix, Temix, Gremix, Firstpix programs	Compatibility: Inside a full screen DOS Window. Protection: Software or Hardware Key	With a full screen NT-DOS session with Hardware Key Protection
Gradix	Compatibility: Inside a full screen DOS Window. Protection: Software or Hardware Key Other Requirements For Gradix: Graphics card must be VESA compatible. Disable EMM386.EXE device driver	Compatibility: Not compatible at all. You must use MS-DOS 5.0 or higher or Windows 95.
All Seistrix Programs	Compatibility: Only possible by rebooting the computer to DOS mode Protection: Software or Hardware Key Other Requirements: Disable EMM386.EXE device driver	Compatibility: Not compatible at all. You must use MS-DOS 5.0 or higher or Windows 95.

In order to run Interpex programs under Windows 95 it is necessary to create a shortcut to a DOS window with the correct properties. To accomplish this follow the steps as outlined below. NT users follow the steps found in the next section entitled *Running Interpex Software Under Windows NT®*.

Step 1

Use the mouse and right click anywhere on the desktop. A menu similar to that shown in Figure 1 will appear. Choose **New** and then **Shortcut**.

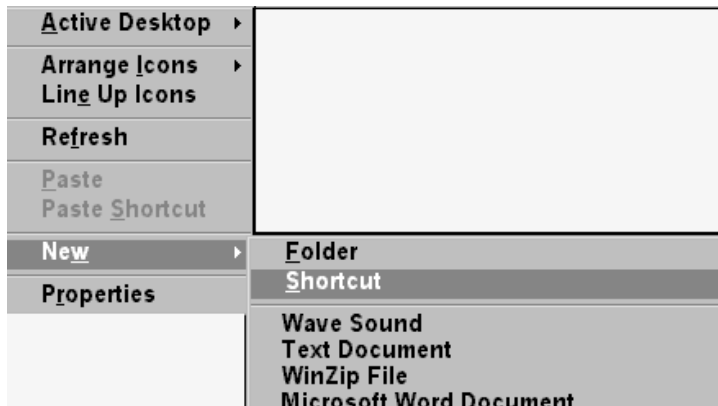


Figure 1: Creating A Shortcut to The Full Screen DOS Window

Step 2

The following dialog box appears. Enter COMMAND.COM in the **Command Line** area and click on **Next**.

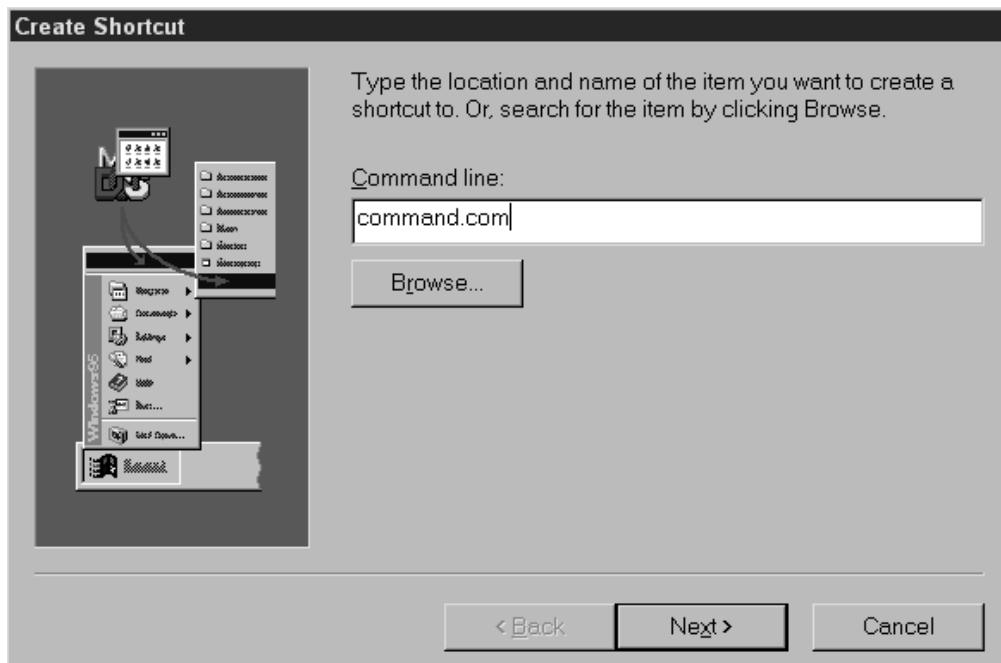


Figure 2: Assigning Command File to Shortcut

After choosing **Next** the Title Dialog Box appears.

Step 3

You may either leave the name for the shortcut MS-DOS Prompt or change it to INTERPEX DOS, for example. After choosing **Finish** a shortcut will be created on your desktop with the name INTERPEX DOS

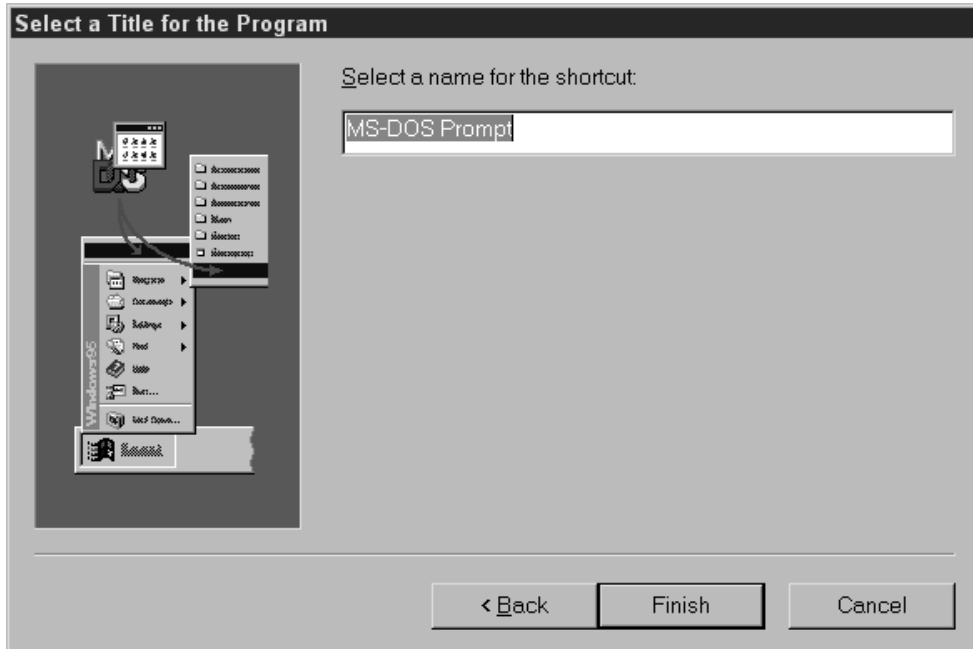


Figure 3: Giving The Shortcut a Title

The shortcut will appear as follows somewhere on your Desktop.



Step 4

To modify the properties of the shortcut right click on the icon and then choose **Properties**. You will be presented with a dialog box similar to the following:

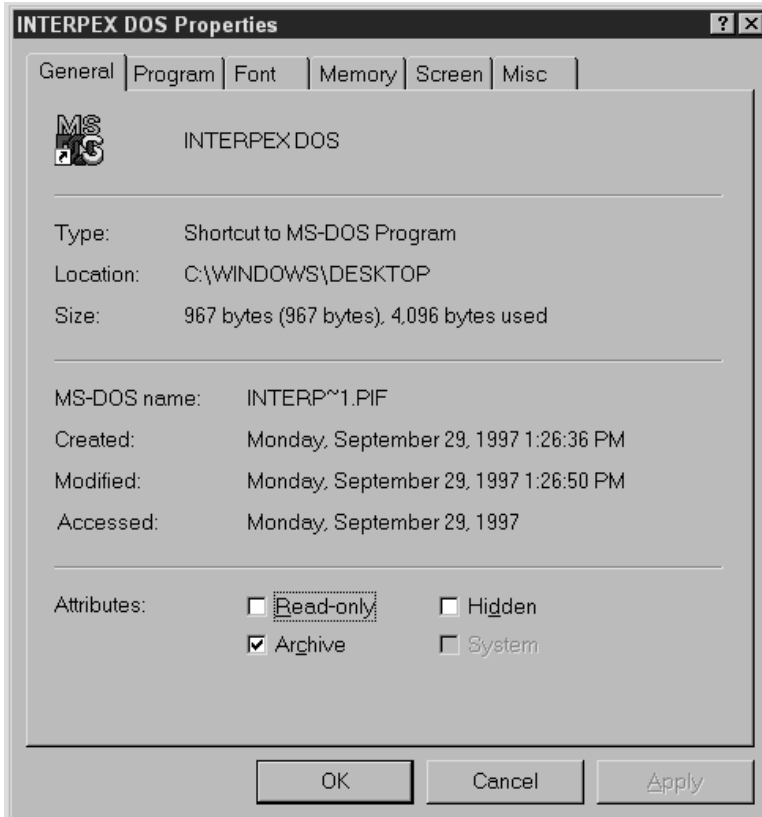


Figure 4: Properties Dialog for Interpex DOS, Windows 95

Choose the **Program** tab and the following appears:

Step 5

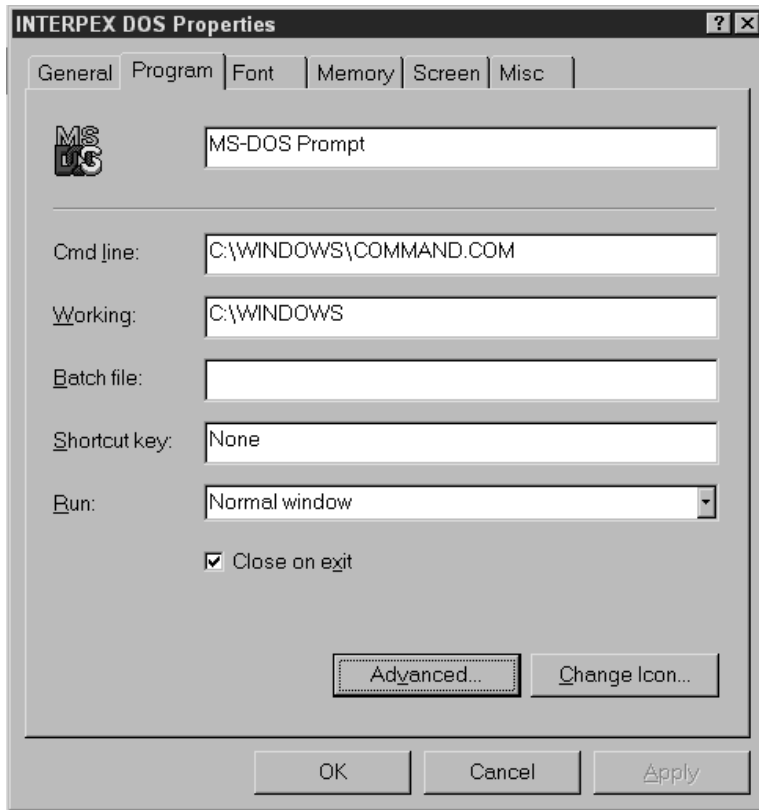


Figure 5: The Program Tab

Choose the **Advanced** option, and the following dialog appears.

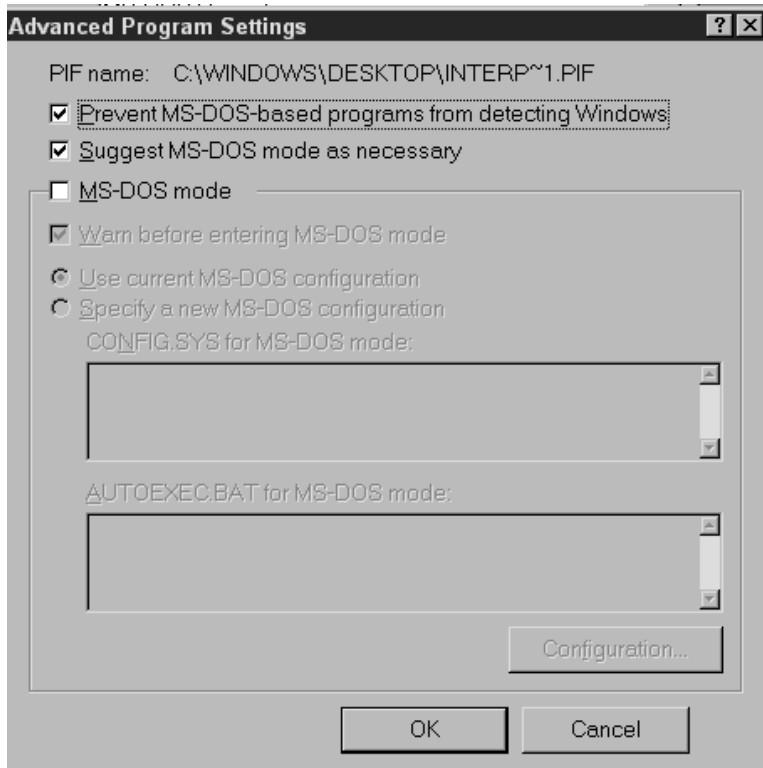


Figure 6: Advanced Program Settings

Make sure the “**Prevent MS-DOS programs from detecting Windows**” option is checked. Choose **OK** when done.

IMPORTANT: If you are creating a Shortcut to run any of the Seistrix programs please skip forward to Step 9.

Step 6

We must at this stage configure the memory for the program that will run in the DOS session. For most programs it will be sufficient to accept the default settings, however for Gradix, Temix & Temix XL, Resix 2DI & Resix IP2DI the settings should be changed:

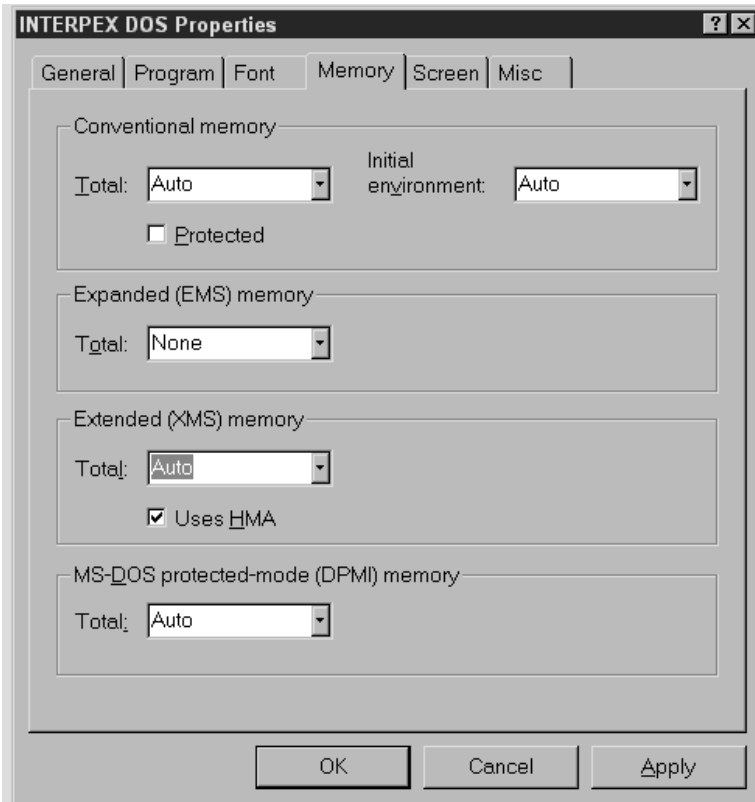


Figure 7: Default Interpex DOS Memory Settings

Changing the Defaults: Settings for GRADIX, TEMIX Family, RESIX 2DI & RESIX IP2DI.

You will have to change the **Initial Environment** setting to 2048 for these programs. This will reserve 2048 bytes for the environment variables. This is for items requiring environment space established by using the SET command in the DOS AUTOEXEC.BAT file).

You should also change the “**MS-DOS protected mode (DPMI) memory**” setting to a 16384 or more (note the drop down list is limited to 16384 but you may type in larger values). This applies to machines that contain 16 Mb physical memory or more. If your PC contains less set the DPMI memory equal to the total amount of physical memory available.

This setting is important for protected mode programs since this is the memory that you are allocating to the program. Don’t just assume if you have 32 Mb of memory that this is the total amount of memory that Windows will allocate to your program.

Step 7

Next we are setting up the graphics environment in which the program will operate. Choose the **Screen** tab for these settings. Make sure that it is set to **Full Screen**. Even though some of the programs will run

in a window this is not always recommended. The performance of certain programs may be sacrificed by running them “windowed” rather than full-screen.

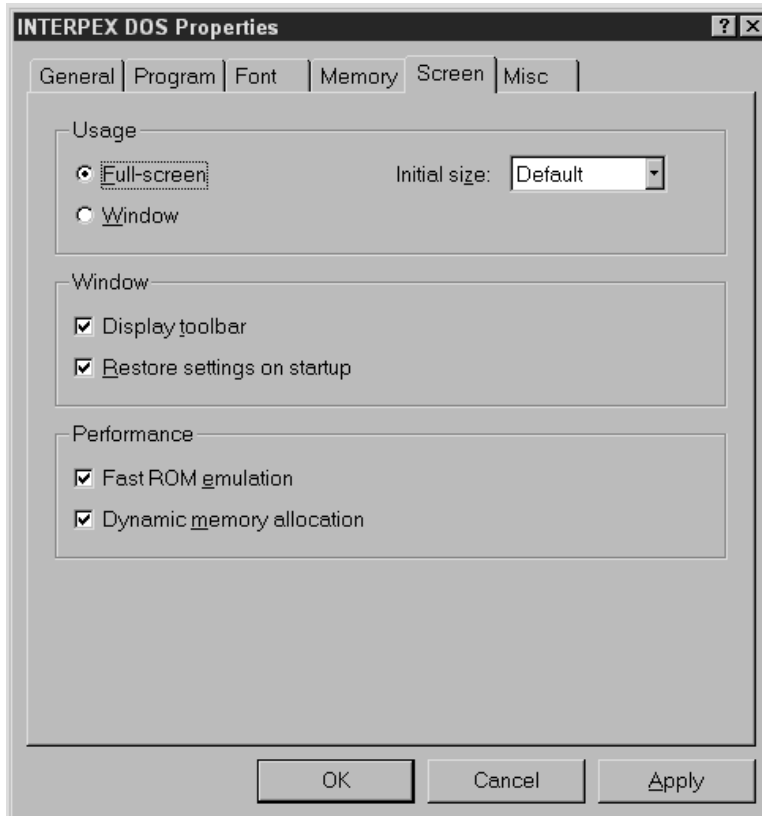


Figure 8: Configuring the Screen Parameters For The Shortcut

Step 8

Next comes the miscellaneous setting contained in the **Misc** tab. The setting under this tab are a hodge podge of unrelated functions that really don't seem to fit in any single category. It's hard to provide an overview of their general properties because of this fact. Nevertheless, we will describe them briefly and discuss the rationale of either choosing or rejecting them.

Screen savers are useful in preventing damage to a computer's video monitor. However, when using Interpex software, you may not want to endure the intrusion of a Windows screen saver into the DOS environment. We therefore recommend that you do not allow this option.



Figure 9: Miscellaneous Property Settings

If you run Interpex software in full screen mode, cutting or pasting is an irrelevant issue. And the mouse cursor is the same as seen in any plain MS-DOS session. So you could either set or forget **Quick Edit**, **Exclusive Mode**, or **Fast pasting**.

If you set the **Background** to **Always Suspend**, whenever you shell to another application, your Interpex software will be halted, only to resume when you bring it back to the foreground. On the other hand, if you elect not to suspend because you wish to run the program in the background while attending to other Windows applications, realize that doing so will slow the rate of calculation down, since you would be sharing CPU cycles with other active processes. Whatever is running in DOS will work at its peak when it is the active application.

Setting **Idle Sensitivity** to **Low** ensures that the Interpex program has top priority while it is running in the foreground.

Interpex software requires none of the **Windows Shortcut Keys** for their operation. Therefore you are at your discretion whether to disable them or not.

Once the miscellaneous settings are all made, choose **OK** to save the shortcut properties. Now you should be ready to run your Interpex software. Please note that for ease of use you can add working directories in the properties page as shown in Step 5. To re-edit the properties right click on the icon and choose the **Properties** item from the list. If you wish to create more than one icon just copy it and edit the properties of the new one.

Step 9 - Special Settings for Seistrix Programs

(Continued from Step 5)

For Seistrix it is necessary to restart the computer in DOS mode. Even though this option is available from the START menu it is more convenient to do this using a shortcut. The reasons for this will become apparent.

After clicking on the ADVANCED button (as described in Step 5) and then selecting “MS-DOS mode” and “Specify a new MS-DOS configuration” the dialog box appears as follows:

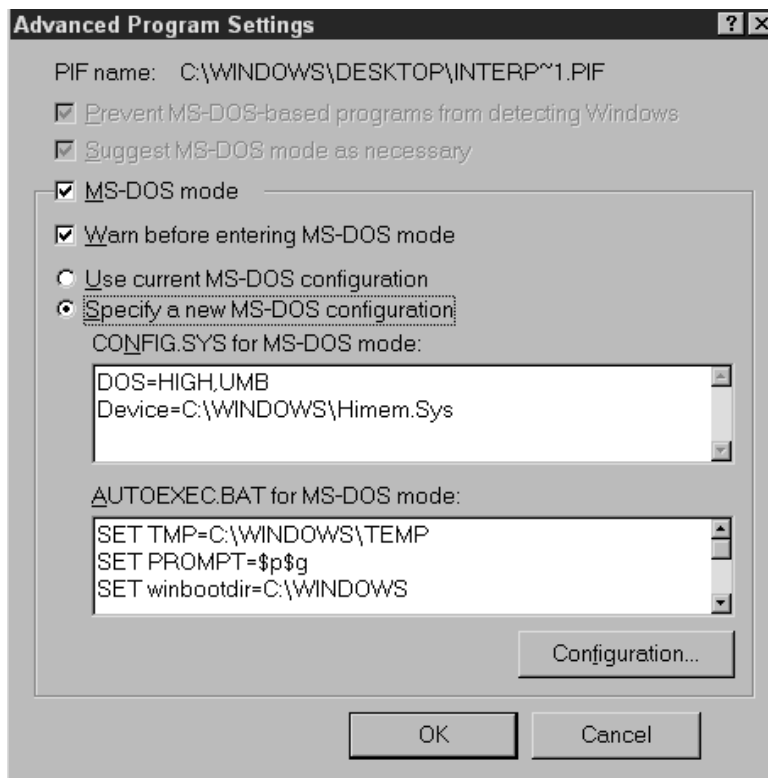


Figure 10: Setting the Advanced Properties To Run Seistrix

This is a very convenient way to manage multiple CONFIG.SYS and AUTOEXEC.BAT files. The contents of these files are displayed in the two white areas. Once this option is accepted all other TABS in the Properties for the DOS Shortcut will be blank. Moreover, when this shortcut is executed the standard CONFIG.SYS and AUTOEXEC.BAT file for normal Windows 95 operation will be set aside and the ones specified below will be activated. The machine will then reboot using the settings of the shortcut as specified. Once you are done running the Seistrix program you can just type EXIT at the DOS prompt and the computer will re-activate your previous startup and configuration files, and reboot back to Windows 95.

Make sure you specify a DOS mouse driver in the above specification either in the CONFIG.SYS or AUTOEXEC.BAT. Also make sure to click on the **Configuration** button and set the options as follows:

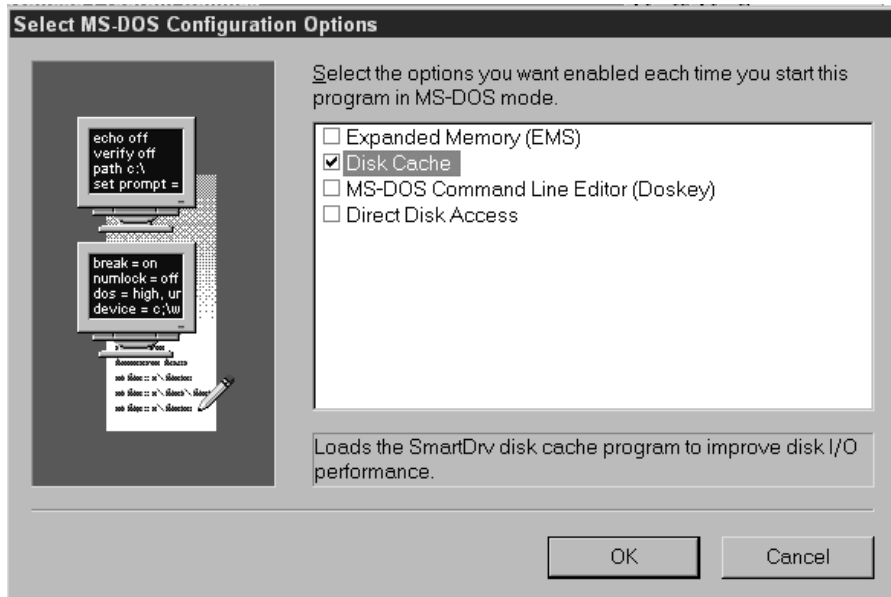


Figure 11: Providing Seistrix with Disk Caching in Windows 95

Since Seistrix does not require **Expanded Memory**, it should not be selected. In fact, trying to emulate V86 mode can be fatal to Seistrix if there is not enough expanded memory allocated. Seistrix relies heavily on disk caching to speed up calculations. Ensure **Disk Cache** is switched on. Keep **Direct Disk Access** switched off. This is reserved for utilities which alter the disk's data structure.

Capturing a Printer Port

The easiest way to do this is to reinstall your printer's drivers. Go to the Start button on the Taskbar. Select **Settings>Printers** and then click on the **Add Remove Printers** icon. During the installation process you will see the following dialog.

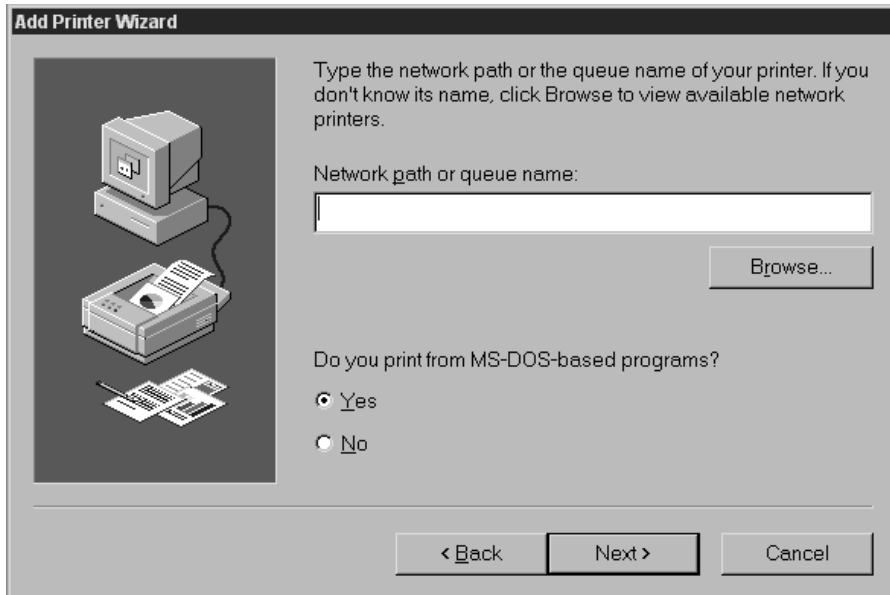


Figure 12: Adding a printer

Enter the complete network path to the desired printer and indicate that you want to print from DOS based programs by selecting the **Yes** radio button. Select the **Next** option. Enter the device name for the network printer.

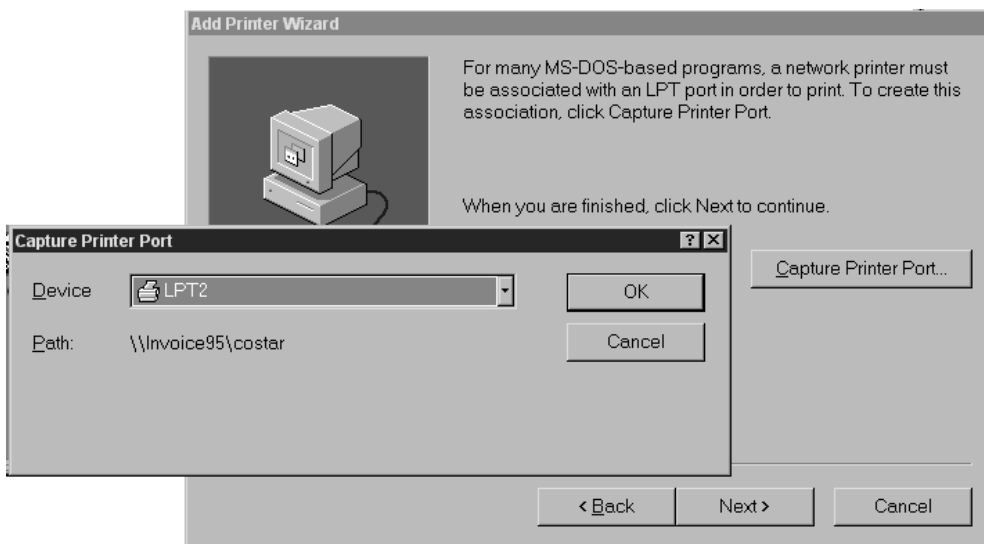


Figure 13: Capturing a printer port

Take care to assign a device name to the printer that is not already being used. Select **OK** and then click on the **Capture Printer Port** button. When the printer driver installation is complete, the printer will be captured and assigned to a virtual printer port that you designated. This procedure does not work the same for Windows NT version 4.