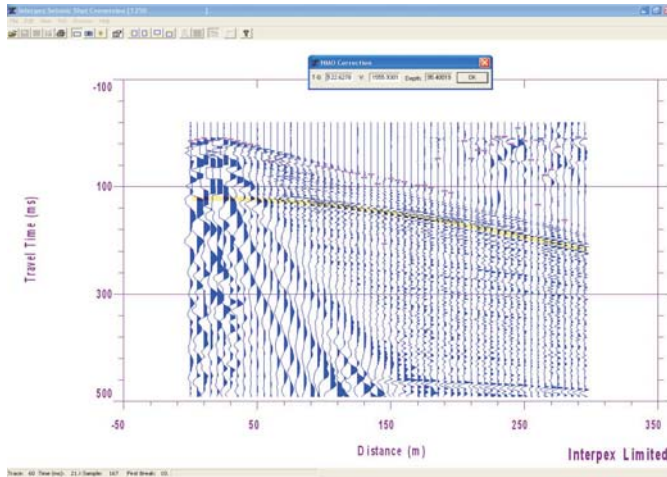


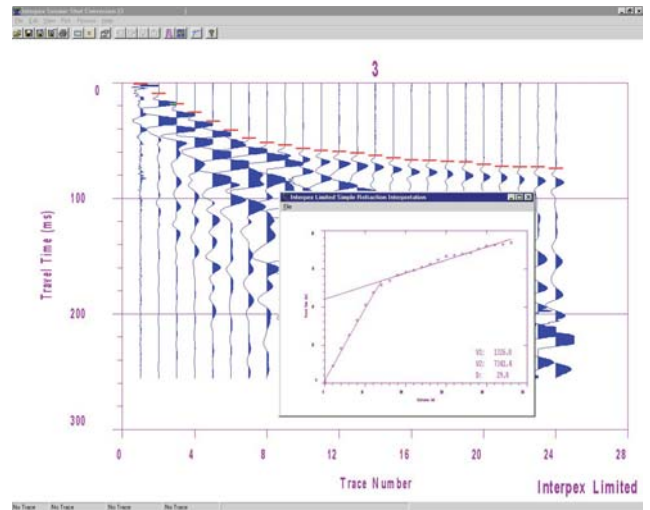
IXSeg2SegY

Seismic format conversion,
Display and Processing Utility



With IXSeg2Segy You Can

- ▶ Import SEG-2, SEG-Y and most historic SEG-1 formats
- ▶ Import non-compliant SEG-Y and user-defined formats.
- ▶ Import & Export of ASCII files for generic interface.
- ▶ Export SEG-2 or SEG-Y format.
- ▶ Command line operation from BAT files.
- ▶ Merge n files with m traces to m files with n traces.
- ▶ Combine Files creates a multi-record SEG-Y file.
- ▶ Concatenate SEG-Y file to a single record.
- ▶ Shot header editing with geometry generation.
- ▶ Geometry can be saved and retrieved. Add to option allows for easy roll-along
- ▶ Integrate, Differentiate, Detrend, Remove DC Level.
- ▶ Truncate, Resample, Remove, Gain or Equalize Traces.
- ▶ Conversion from unsigned 2-byte integer.
- ▶ Bandpass filtering on interactive screen.
- ▶ F-K Velocity Filtering on interactive screen.
- ▶ Single shot NMO reflection interpretation with Save to File.
- ▶ Single refractor velocity determination with Save to File.
- ▶ Two-layer refraction interpretation.
- ▶ Amplitude Spectrum display of entire record, part of record (as displayed) or single trace.



Shot Header Editor

Sample Interval (ms): 0.2500000 Shot Number: 0

Delay Time (ms): 0.0000000 Shot Position Easting: 230.10000

Uphole Time (ms): 0.0000000 Shot Position Northing: 0.0000000

Shot Depth: 0.0000000 Shot Elevation: 0.0000000

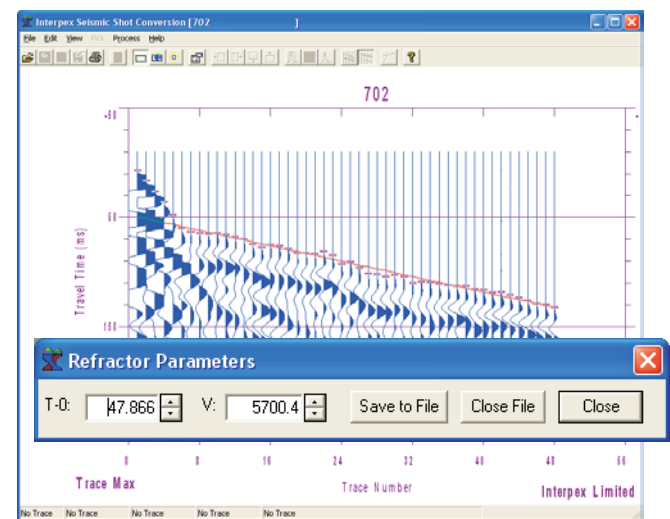
24 Traces with 1024 Samples per trace

Geophone (Receiver) Positions

Number	Easting	Northing	Elevation
1	0.0000	0.0000	0.0000
2	10.000	0.0000	0.0000
3	20.000	0.0000	0.0000
4	30.000	0.0000	0.0000
5	40.000	0.0000	0.0000
6	50.000	0.0000	0.0000
7	60.000	0.0000	0.0000
8	70.000	0.0000	0.0000

Create Geometry
Open Geometry
Save Geometry
Save Geometry As
Add To
Multiply By

OK Cancel



P.O. Box 839 Golden CO 80402
Tel (303) 278 9124 Fax (303) 278 4007
www.interpex.com info@interpex.com